

BULLET NETWORK CAMERA

QUICK START GUIDE

V1.0.0

No.	Name	Description	No.	Name	Description
1	Lens	There are 2.8mm, 3.6mm, 2.7~13.5 and other specifications	6	Audio In	Audio In
2	Infrared light/ Red & Blue Flashing Light/ Smart light	Used for night vision/ Used as a warning/ Used as a warning	7	Audio Out	Audio Out
3	Fixing screw	Used to adjust the camera angle	8	RJ45 Port	Used to connect video and power supply via Ethernet between NVR & IPC
4	SD Card Slot	Used to connect SD card for storage	9	Power	DC connector for local power connection
5	Reset Button	Used to reset the camera settings when camera is powered on	10	Alarm	Terminal ports for alarm in/out

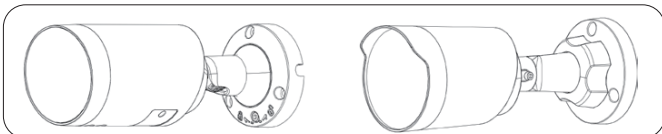
[NOTE] After power on, please press and hold the reset button for 10 seconds, this will reboot the camera and set all configurations to default.

[NOTE] This diagram and list are for reference only, and do not represent all cameras.

3. MOUNTING THE CAMERA

Bullet Camera Installation

Bullet camera has the following types, the pictures are for reference only.



There are two options for the wall installation of the camera, one of which is an open installation of the cable (the cable is naturally draped outside the bracket) and the other is a concealed installation (the cable is buried inside the wall).

WHAT'S IN THE BOX

IP Camera	Mounting Screws
Drill Template	Expansion Bolts
RJ45 Waterproof Cover	Hex Key
Quick Start Guide	

1. FEATURES



IPC series

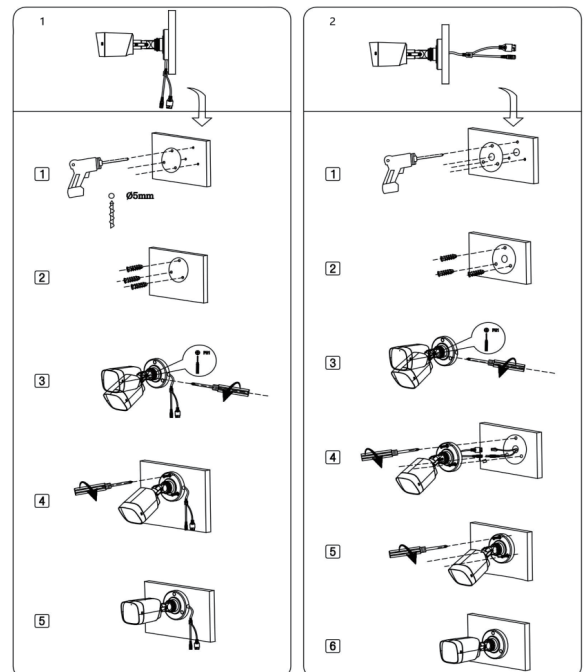
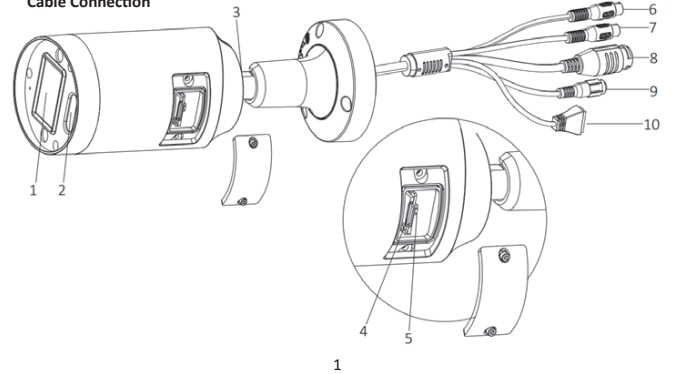
IPC series adopt IQSense technology embeds deep-learning algorithms into security cameras and video recorders to equip businesses and home-owners with smart tools to take security to the next level, both indoors and outdoors.

Features

- Detects intrusion threats in real time and triggers alerts to users' mobile phones for faster response.
- Differentiates people and vehicles from other moving objects, allowing security teams to focus on real threats.
- The intelligent IQsense Algorithm focusing on human and vehicle targets, making it easier and more efficient to find specific targets when searching video footage.
- Select models of cameras offer built-in sirens and red-blue flashing lights alarms.

2. APPEARANCE

Cable Connection



Installation 1:

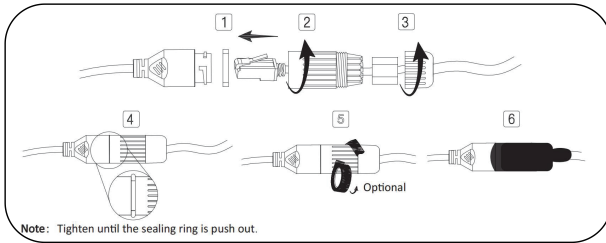
1. Confirm the installation location, stick on the Drill Template, and then punch holes in the wall.
2. Install the Expansion Bolts.
3. Loosen the screw to turn the camera easily.
4. Put the screw through the hole of the base, and fix it to the wall with a screwdriver.
5. Complete the installation.

Installation 2:

1. Attach the Drill Template according to the cable outlet holes in the wall, then punch holes in the wall according to the Drill Template.
2. Install the Plastic Plug.
3. Loosen the screws in order to facilitate the rotation of the camera and to adjust the monitoring direction.
4. Thread the buried cable in the wall through the cable outlet hole in the wall and connect it to the camera cable. (Connect cable please refer to the Page 6)
5. Insert the screws through the camera base holes and fix them to the wall with a screwdriver.
6. Complete the installation.

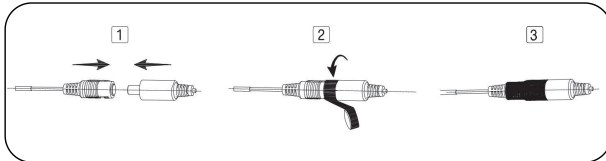
Connecting Network Cable

1. Attach the seal ring to the copper interface and insert the cable into the Ethernet copper interface.
2. Screw the waterproof bolt in.
3. Screw in the waterproof bolt lid.
4. Tighten until the sealing ring is push out.
5. Optional: Use the waterproof tape to cover the RJ45 waterproof Cover.
6. Finish the installation.



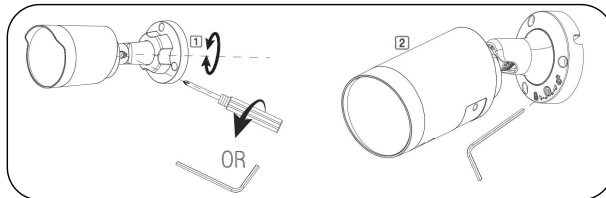
Connecting Power cable

1. Connect the male and female ends of the power cord.
2. Wrap the male and female connectors with insulating tape.
3. Use the Waterproof Cover to cover the connection between the male and female heads.



Loosening the screws to adjust the camera angle

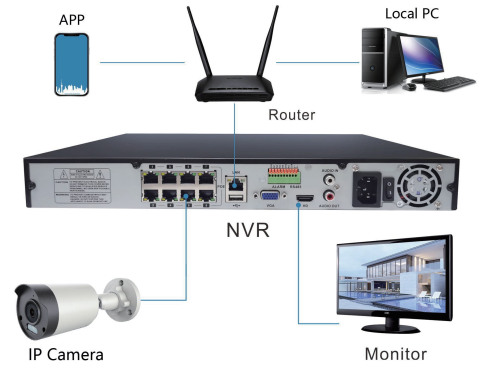
There are two ways: 1. loosening the fixing screw with a screwdriver. 2. loosening the screw with the Hex Key.



4

4. CONNECTING IP CAMERA TO NVR WITH POE LOCALLY

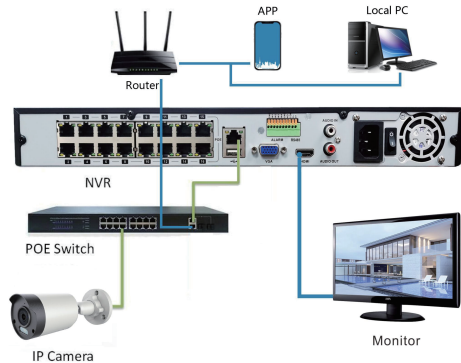
Connect the camera to the PoE port of the NVR.



[NOTE] The pictures are for reference only and do not represent actual cameras or devices.

5. CONNECTING IP CAMERAS TO NVR FROM LAN

Connect the NVR, PoE switch and cameras within the same LAN. (Note: The pictures are for reference only)

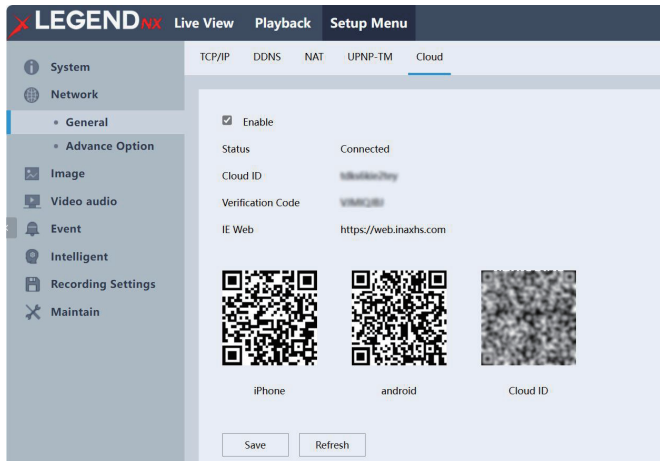


5

6. ADD THE CAMERA TO THE APP

You can install the APP by following the steps below:

1. Log in to the web interface of IPC, after you have activated your device normally.
2. Go to **Setup Menu** → **Network** → **General** → **Cloud**.
3. Scan the QR Code to download the Android and IOS Apps.
4. Open the vEye Pro App on your smartphone.
5. Log in to your registered account.
6. Click the option in the upper left corner to open the 'Menu'.
7. Go to Live View page, then click '+' in the upper right corner to add a device.
8. Allow the app to access the devices, scan the QR code as shown below.
9. Set a name for the device so you can easily identify it from the list, and you can use the installation location for name settings.
10. Tap 'Save', then you will be able to 'Start Live View', or find the newly added device from the device menu, and click the play button in the triangle to start real-time previews.



[NOTE] You can also install the App from the IOS Store or Google Play.

6

7. CAUTION



This symbol is intended to alert users of important operations and maintenance instructions within the documentation accompanying the product.



This symbol is intended to alert users of uninsulated 'dangerous voltage' within the product enclosure that may be strong enough to pose a risk of electric shock to untrained personnel.

	CAUTION:		
	RISK OF ELECTRIC SHOCK. DO NOT OPEN		
SHOCK	CAUTION: To reduce the risk of electric shock. Do not remove cover or back. There are no user serviceable parts inside. Refer products to suppliers.		
CAUTION	To prevent electric shocks and risk of fire hazard, do not an specified power source.		



CAUTIONS:

- Please note the cameras operating temperature and its environment requirements. Avoid using the cameras in extremely high or low temperatures. The recommended operating temperature is -10~+50°C. To avoid damage to the light processor (CMOS), do not expose the camera lens to direct sunlight or other bright light sources.
- Do not mount the camera near radiators or heat sources.
- The power supply must match the requirements of the camera. Ensure the output voltage, current, voltage polarity and operating temperature are within the range required by the camera power supply.
- During a thunderstorm, please ensure an anti-thunder device is connected or disconnect the power supply to the camera.

7